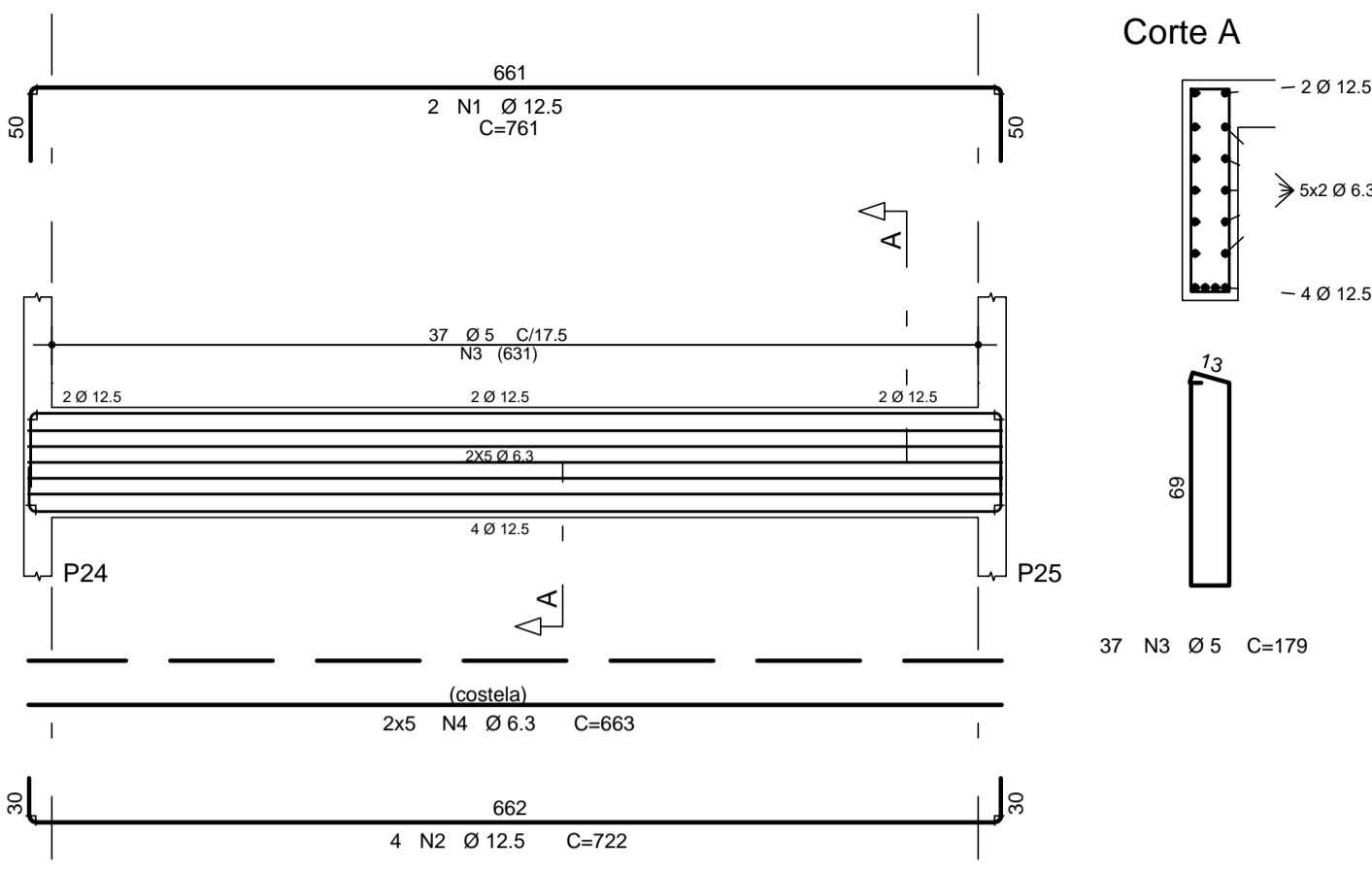
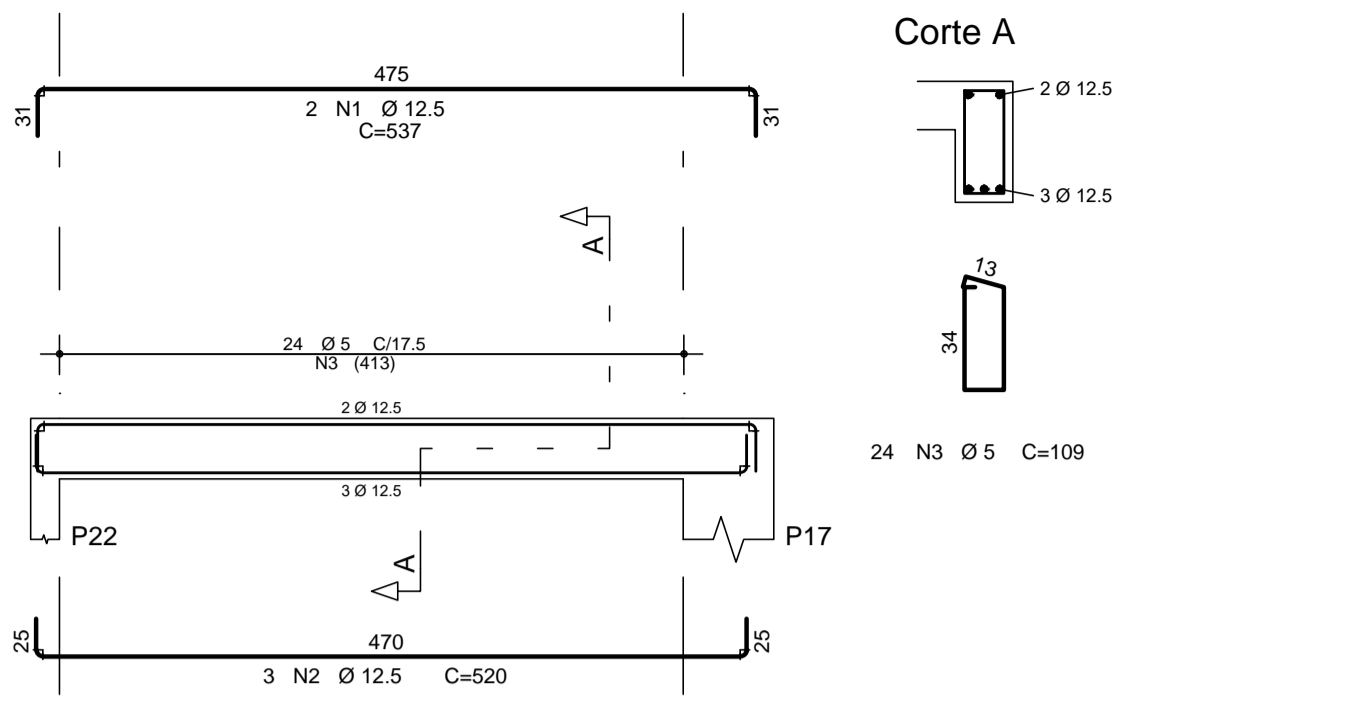


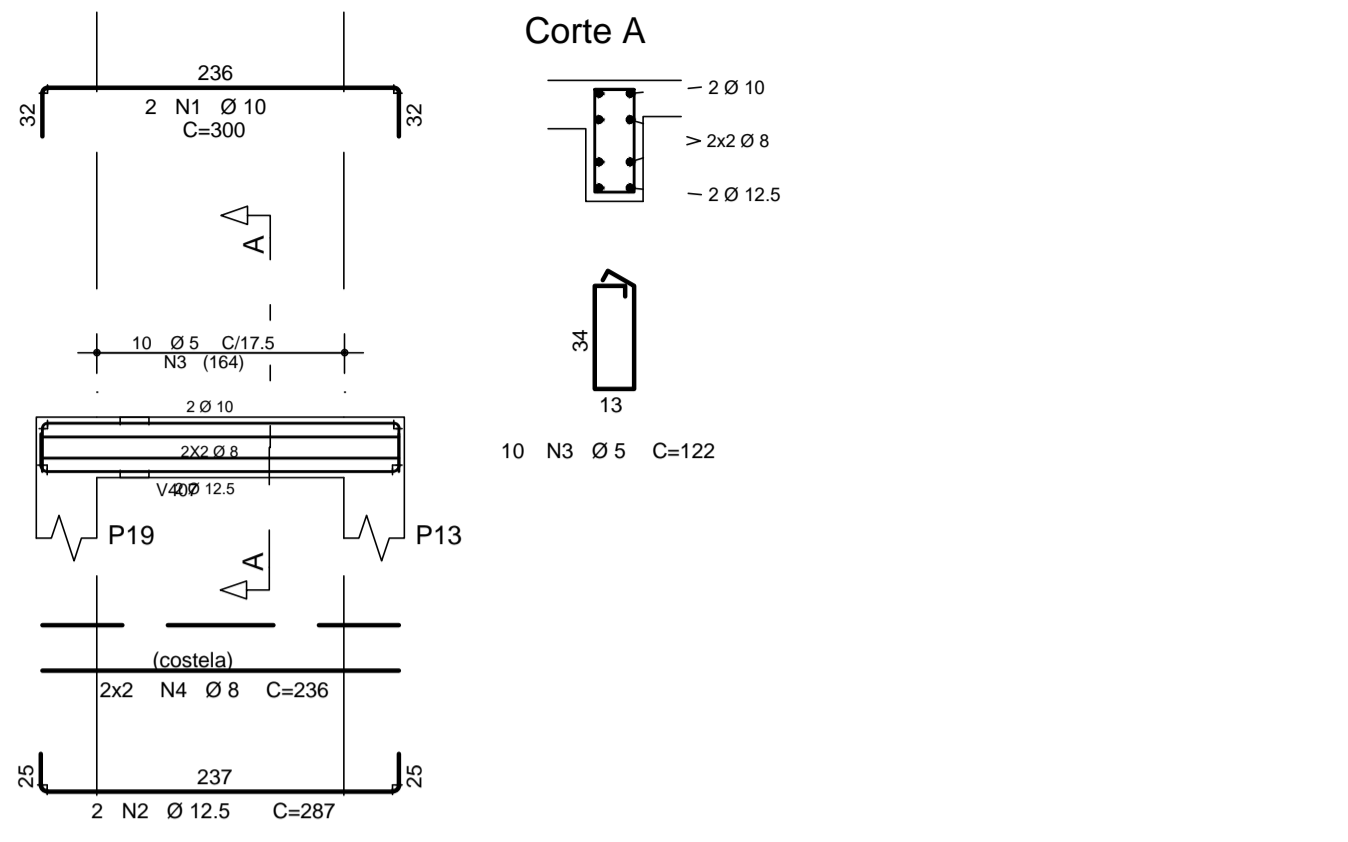
V412 19/75



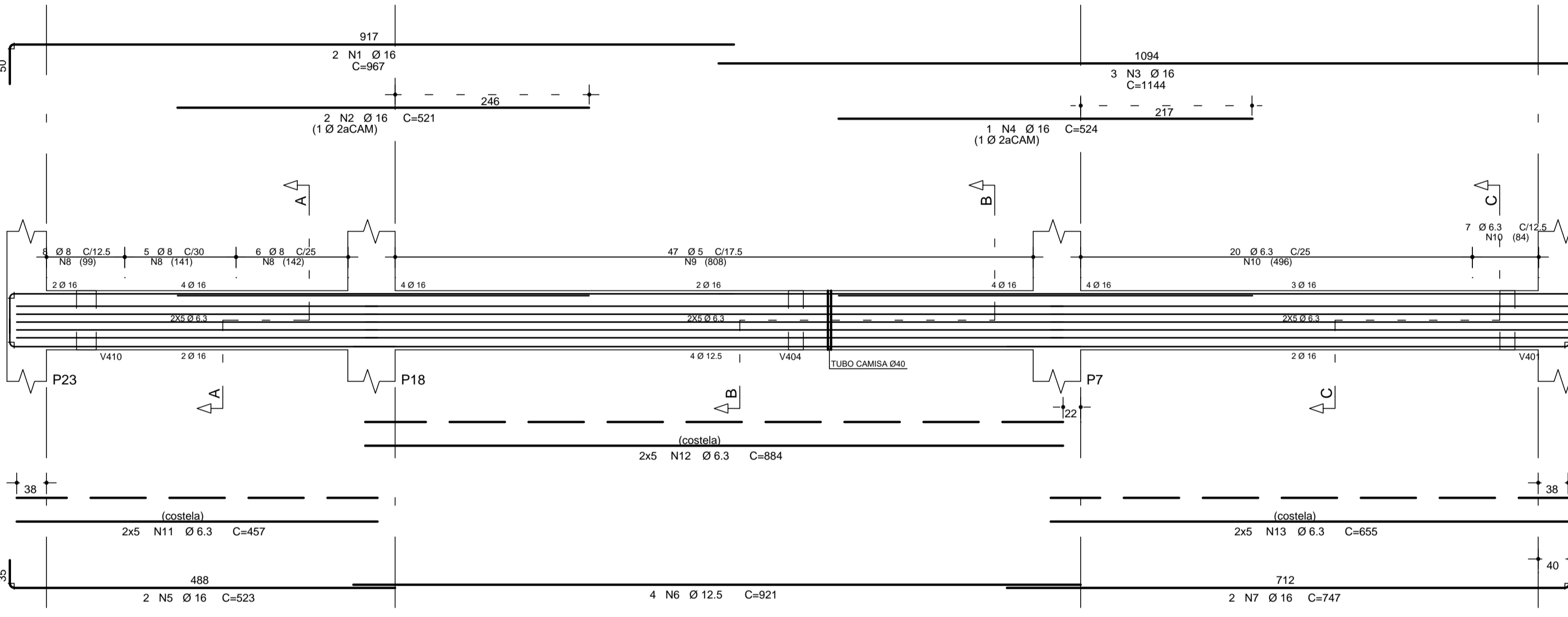
V413 19/40



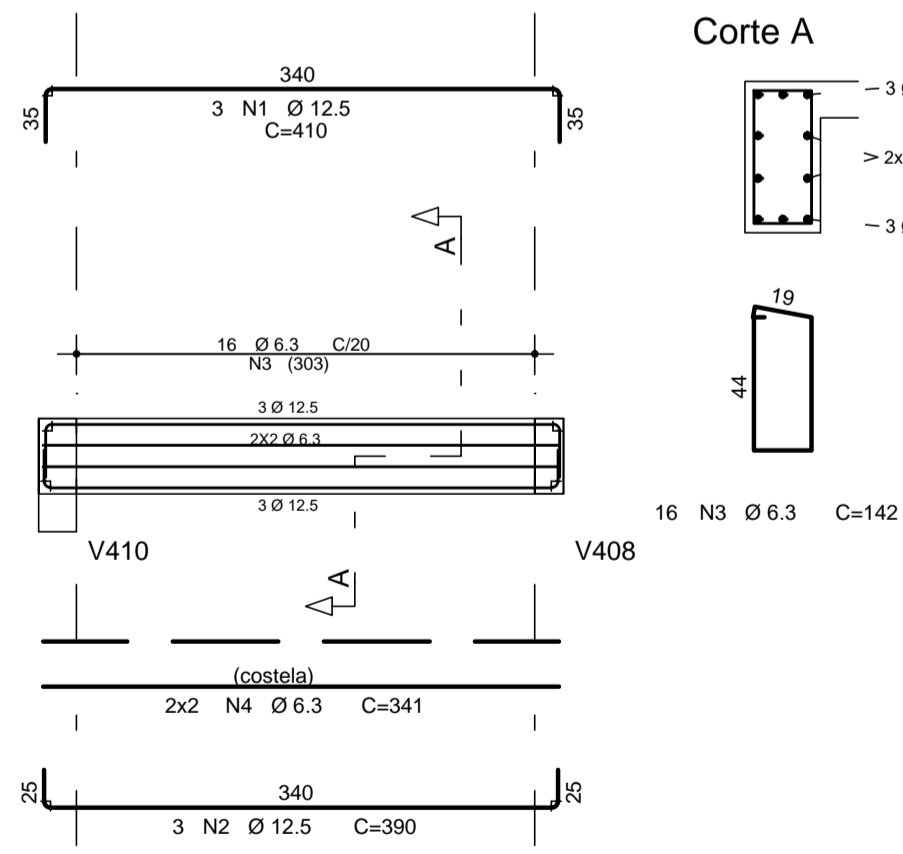
V415 19/40



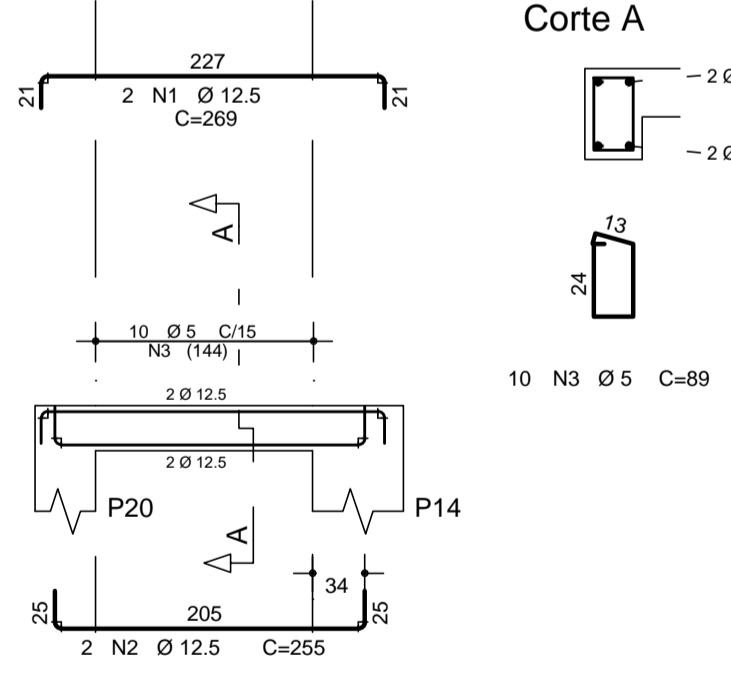
V414 19/75



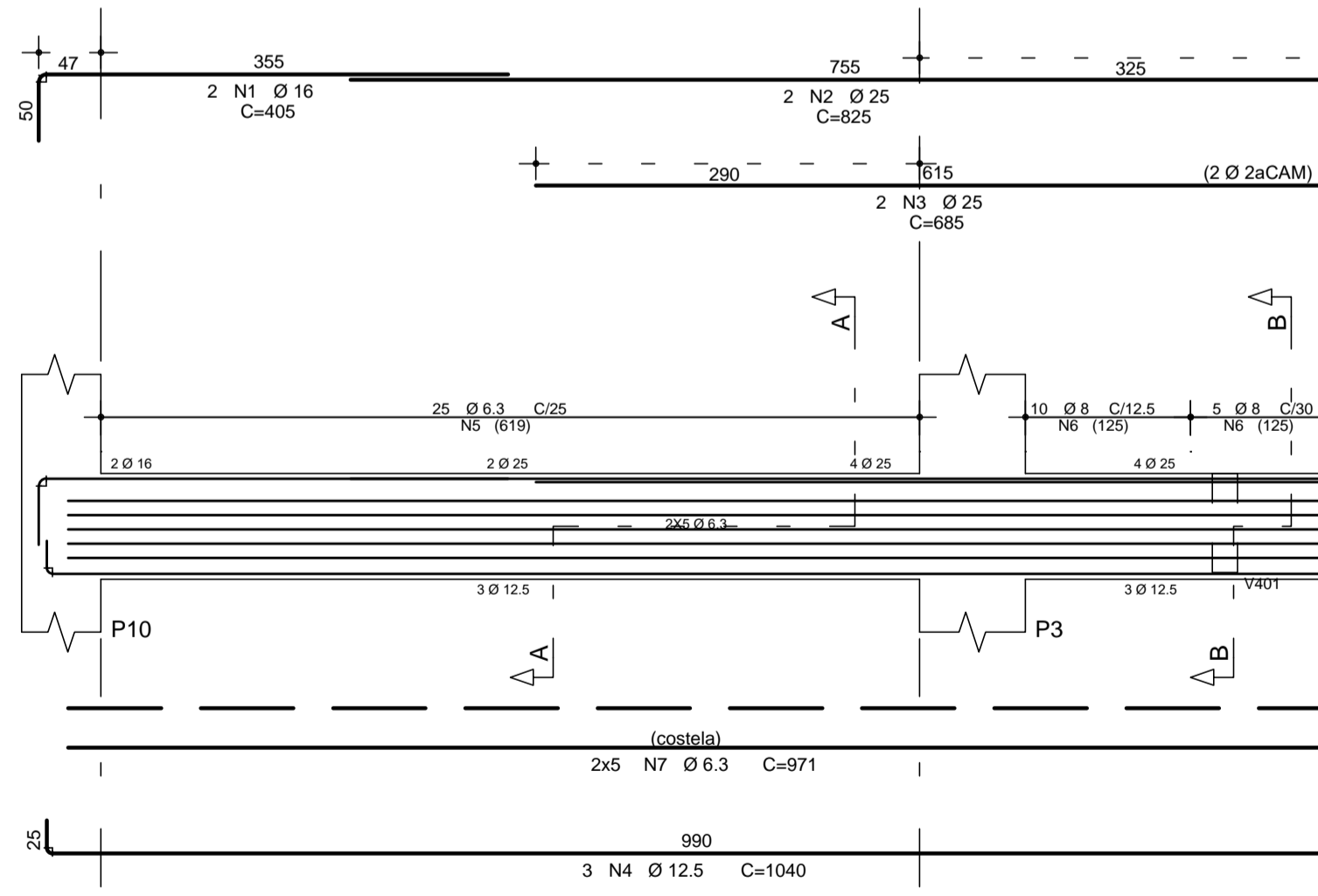
V416 25/50



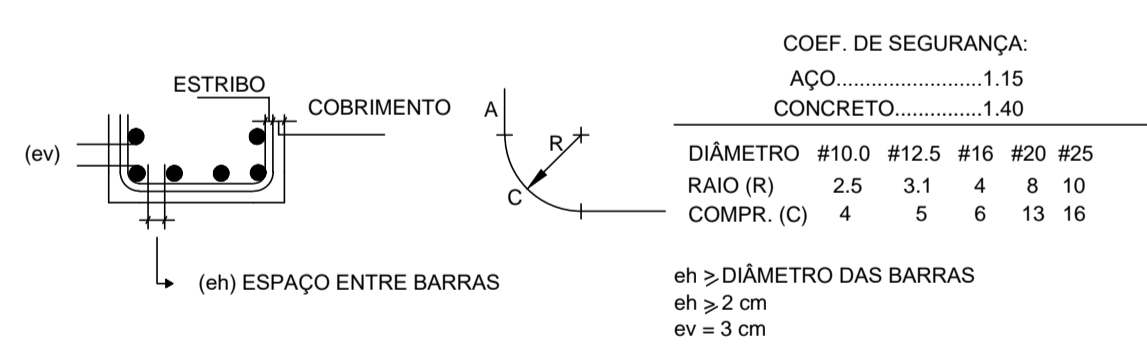
V417 19/30



V418 19/80



DOBRAS E DIST. ENTRE BARRAS



ACO	POS	BIT (mm)	QUANT	COMPRIMENTO UNIT (cm)	TOTAL (cm)
V412					
50A	1	12.5	2	761	1522
60B	2	12.5	4	722	2888
50A	3	5	37	179	6623
50A	4	6.3	10	663	6630
V413					
50A	1	12.5	2	537	1074
50A	2	12.5	3	520	1560
60B	3	5	24	109	2616
V414					
50A	1	16	2	967	1934
50A	2	16	2	521	1042
50A	3	16	3	1144	3432
50A	4	16	1	524	524
50A	5	16	2	523	1046
50A	6	12.5	4	921	3684
50A	7	16	2	747	1494
50A	8	8	19	195	3705
60B	9	5	47	179	8413
50A	10	6.3	27	193	5211
50A	11	6.3	10	457	4570
50A	12	6.3	10	884	8840
50A	13	6.3	10	655	6550
V415					
50A	1	10	2	300	600
50A	2	12.5	2	287	574
60B	3	5	10	122	1220
50A	4	8	4	236	944
V416					
50A	1	12.5	3	410	1230
50A	2	6.3	16	142	2272
50A	3	6.3	16	142	2272
50A	4	6.3	4	341	1364
V417					
50A	1	12.5	2	269	538
50A	2	12.5	2	255	510
60B	3	5	10	89	890
V418					
50A	1	16	2	405	810
50A	2	25	2	825	1650
50A	3	25	2	685	1370
50A	4	12.5	3	1040	3120
50A	5	6.3	25	190	4750
50A	6	6.3	15	192	2880
50A	7	6.3	10	971	9710

RESUMO AÇO CA 50-60			
ACO	BIT (mm)	COMPR (m)	PESO (kg)
60B	5	198	30
50A	6.3	499	122
50A	8	75	30
50A	10	6	4
50A	12.5	179	172
50A	16	103	162
50A	25	30	116
Peso Total 60B =			30 kg
Peso Total 50A =			606 kg
Volume de Concreto =			6,20 m3

EDIF 3

DIVISAÃO DE PROJETOS DE EDIFICAÇÕES - AVENIDA SÃO JOÃO, 473 - 1ª ANDAR CEP 01335-000 - TEL.: 3337-9955

DIRETORA: ENG. BEATRIZ LOMONACO F. GOMES

CONTRATADA: EXATA ENGENHARIA E COMERCIO LTDA.

EXATA
 ENGENHARIA E COMERCIO LTDA.

R. RIACHUELO, 240 - CENTRO CAMPINAS / SP - CEP 13015-320 FONE/FAX: (19) 3298-1034

SITE: WWW.EXATACAMPINAS.COM.BR EMAIL: CONTATO@EXATACAMPINAS.COM.BR

AUTOR DO PROJETO: ENG. EDUARDO PRATA

PMSP - SIURB - EDIF

PREFEITURA DE SÃO PAULO - SECRETARIA DE INFRA-ESTRUTURA URBANA E OBRAS - DEPARTAMENTO DE EDIFICAÇÕES

CEI PADRÃO EDIF 2019 10S (NORMAL)

VÁRIOS - SP
 PROJETO ESTRUTURAL - CONCRETO ARMADO SUPRAESTRUTURA

DET. ARMAÇÃO DAS VIGAS - V400

ASSINATURA

COF. DO NÍVEL: 16.91.125-SE
 EMPREEND.: 023.S.19

ESCALA: 1:50

S - 17/32